

**Lighting of London**

**Magtrak.**

---



LIGHTING OF LONDON

*"Our ethos is based on delivering exceptional architectural lighting, through unrivalled technology and advanced design."*

**Steve Noyes, Company Director**

A white, handwritten signature in a cursive style, appearing to read 'Steve Noyes', with a long, sweeping underline that extends to the right.

# Contents

---



- 1. What is magnetic track lighting?** pg.4
- 2. Introducing Magtrak.** pg.5 - 8
- 3. The Magtrak Collection.** pg.9.
  - .Modules** pg.10 - 13
  - .Profiles** pg.14
  - .Connectors** pg.15 - 16
  - .Suspension** pg.17
- 4. Design Your Magtrak System.** pg.18.
  - .Profile** pg.19
  - .Formation** pg.20
  - .Control Method** pg.21
  - .Driver Location** pg.22
  - .Modules** pg.23



---

Track lighting is considered to be one of the most innovative solutions in modern LED lighting. This type of lighting works by attaching the lighting components to a track by means of a magnetic suction. This makes it more convenient and flexible to both install and dismantle the lighting components. Due to the offering of completely versatile options, it is possible to create completely unique displays of light and feature areas of your project space while maintaining complete functionality.



## Introducing Magtrak.

---

Lighting of London is proud to offer our partners our very own unrivalled version of magnetic track lighting.

Magtrak is a 24V running track system which offers endless lighting solutions for any interior design.

The Magtrak system has been created to provide a sleek and modern feel to high-end residential, bespoke office environments and premier retail outlets, with its clean lines, minimalistic appearance and versatile application. This carefully crafted, modernised form of lighting elevates any room with its hidden power source and seamless corners.

The Magtrak 24V magnetic track lighting system comprises of small profiles/tracks that host LED light modules. The light modules are magnetically attached to the tracks, allowing easy installation without the need for any tools. The low voltage of the system enables the light modules to be positioned and moved even when the power is on. When the light modules connect magnetically to the rail, they are instantly powered and start working. Installing the light modules is as easy as a simple 'click'.

The Magtrak system provides limitless configuration possibilities, thanks to its extensive range of profiles/tracks, connections, installation types, light modules, and control options. This makes the Magtrak magnetic lighting system a comprehensive solution even for the most demanding architects, interior designers, and lighting designers.



---

## **An All In One Lighting Solution.**

Our Magtrak profile is designed to be slim, measuring only 27mm, giving a modern and sleek look. You can choose from either 1m or 2m lengths, and with our various connectors, you can create any desired running track length. We offer 3 different installation types, which include recessed, surface, and suspended, depending on your preference. Our Magtrak collection is incredibly versatile and integrates seamlessly into any vision you have in mind, no matter the desired finish.



# Redefining Architectural Lighting.

Architectural lighting serves the purpose of enhancing the unique qualities and features of a space. It's not just about providing light, but about creating an enticing and captivating atmosphere that goes beyond functionality. Typically, architectural lighting is designed to blend seamlessly into the space, subtly enhancing it rather than standing out as the centerpiece of the room.

## Magtrak redefines this,

Our Magtrak system blends architectural functionality with modern design, offering a whole new concept of architectural lighting.







3

Profile options

15

LED modules

8

Connectors

## Endless Lighting Solutions.

Magtrak system provides a straightforward and versatile solution to any lighting problem. Three different installation options allow integration into any setting. We offer eight different connectors to create stunning illumination formations. Our LED modules cover all lighting options, including spotlights, linear lighting, and a pendant fixture.

With Magtrak, any vision for your lighting design can come to life.

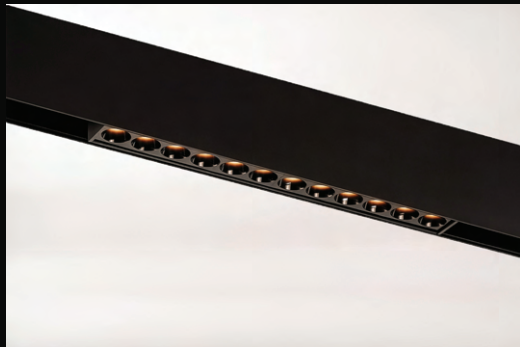
# Dot Series

## Dot.06



**Power** 6W 24V DC  
**CRI** >90  
**CCT** 2700K  
**Beam Angle** 20° / 34° / 48°  
**Dimmable** TRIAC  
**IP** 20  
**Finish** Matt Black

## Dot.12



**Power** 12W 24V DC  
**CRI** >90  
**CCT** 2700K  
**Beam Angle** 20° / 34° / 48°  
**Dimmable** TRIAC / DALI  
**IP** 20  
**Finish** Matt Black

## Dot.24



**Power** 24W 24V DC  
**CRI** >90  
**CCT** 2700K  
**Beam Angle** 20° / 34° / 48°  
**Dimmable** TRIAC / DALI  
**IP** 20  
**Finish** Matt Black

# Fold Series

## Fold.06



**Power** 8W 24V DC  
**CRI** >90  
**CCT** 2700K  
**Beam Angle** 20° / 34° / 48°  
**Dimmable** TRIAC  
**IP** 20  
**Finish** Matt Black

## Fold.12



**Power** 16W 24V DC  
**CRI** >90  
**CCT** 2700K  
**Beam Angle** 20° / 34° / 48°  
**Dimmable** TRIAC / DALI  
**IP** 20  
**Finish** Matt Black

# Modules.

# Line Series

## Line.20



**Power** 8W 24V DC  
**CRI** >90  
**CCT** 2700K  
**Beam Angle** 110°  
**Dimmable** TRIAC / DALI  
**IP** 20  
**Finish** Matt Black

## Line.40



**Power** 15W 24V DC  
**CRI** >90  
**CCT** 2700K  
**Beam Angle** 110°  
**Dimmable** TRIAC / DALI  
**IP** 20  
**Finish** Matt Black

## Line.80



**Power** 30W 24V DC  
**CRI** >90  
**CCT** 2700K  
**Beam Angle** 110°  
**Dimmable** TRIAC / DALI  
**IP** 20  
**Finish** Matt Black

**Modules.**

# Pendant Series

## Focus.35



**Power** 5W 24V DC  
**CRI** >90  
**CCT** 2700K  
**Beam Angle** 30°  
**Dimmable** TRIAC / DALI  
**IP** 20  
**Finish** Matt Black



# Spot Series

## Spot.35



<b>Power</b>	5W 24V DC
<b>CRI</b>	>90
<b>CCT</b>	2700K
<b>Beam Angle</b>	20° / 30° / 40°
<b>Dimmable</b>	TRIAC/DALI
<b>IP</b>	20
<b>Finish</b>	Matt Black

## Spot.35.T



<b>Power</b>	2 x 5W 24V DC
<b>CRI</b>	>90
<b>CCT</b>	2700K
<b>Beam Angle</b>	20° / 30° / 40°
<b>Dimmable</b>	TRIAC / DALI
<b>IP</b>	20
<b>Finish</b>	Matt Black

# Spot Series

## Spot.50



<b>Power</b>	10W 24V DC
<b>CRI</b>	>90
<b>CCT</b>	2700K
<b>Beam Angle</b>	18° / 24° / 36°
<b>Dimmable</b>	TRIAC/DALI
<b>IP</b>	20
<b>Finish</b>	Matt Black

## Zoom.55



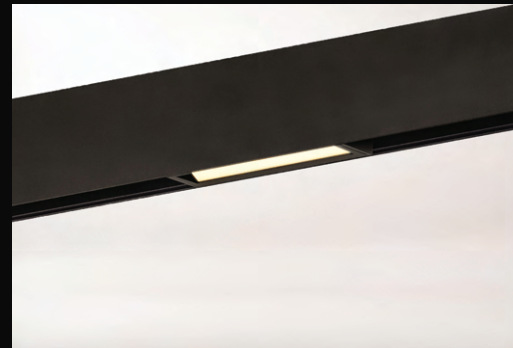
<b>Power</b>	10W 24V DC
<b>CRI</b>	>90
<b>CCT</b>	2700K
<b>Beam Angle</b>	20° - 60°
<b>Dimmable</b>	TRIAC / DALI
<b>IP</b>	20
<b>Finish</b>	Matt Black



**Modules.**

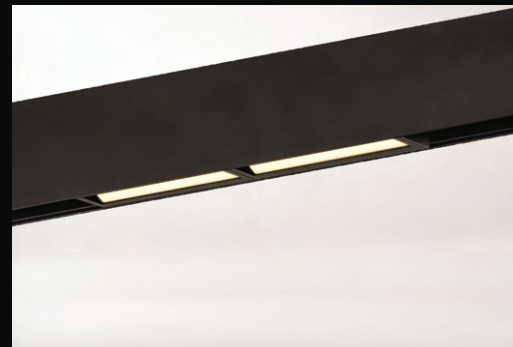
## Wave Series

### Wave.20



<b>Power</b>	12W 24V DC
<b>CRI</b>	>90
<b>CCT</b>	2700K
<b>Beam Angle</b>	110° @ 30° tilt
<b>Dimmable</b>	TRIAC / DALI
<b>IP</b>	20
<b>Finish</b>	Matt Black

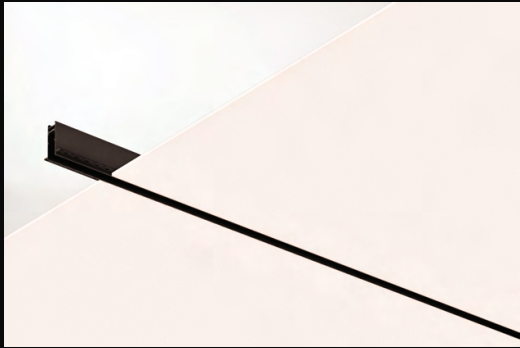
### Wave.30



<b>Power</b>	18W 24V DC
<b>CRI</b>	>90
<b>CCT</b>	2700K
<b>Beam Angle</b>	110° @ 30° tilt
<b>Dimmable</b>	TRIAC / DALI
<b>IP</b>	20
<b>Finish</b>	Matt Black

# Profiles

## Recessed



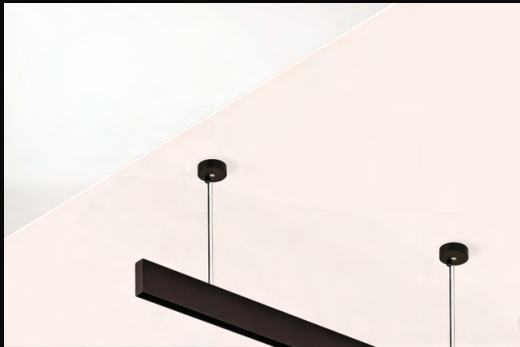
**Length** 1m / 2m  
**Version** TRIAC / DALI

## Surface



**Length** 1m / 2m  
**Version** TRIAC / DALI

## Suspended

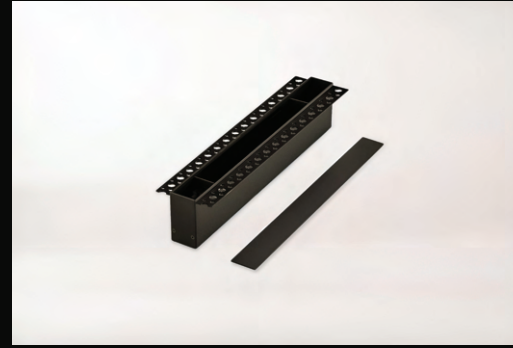


**Length** 1m / 2m  
**Version** TRIAC / DALI

# Magtrak. Installation

# Driver Boxes

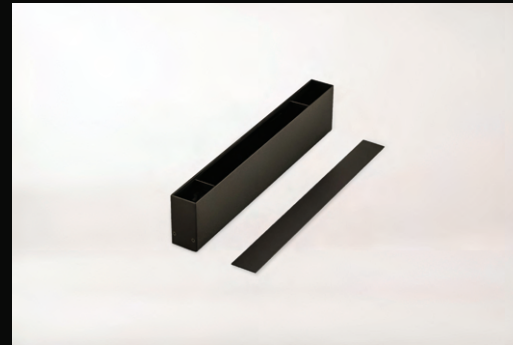
## Driver Box Recessed



- DriverBox.R comes with a 150w TRIAC/0-10vdriverbuilt-in.
- DriverBox.R.DALI comes with a 150W DALI driver built-in.
- DriverBox.RE contains no driver and therefore is an empty unit. No driver can be retro fitted inside, this is for decorative purposes only.

• **Driver Box Dimensions:** L450mmx W27.5mmxH58mm

## Driver Box Surface



- DriverBox.S comes with a 150w TRIAC/0-10vdriverbuilt-in.
- DriverBox.S.DALI comes with a 150W DALI driver built-in.
- DriverBox.SE contains no driver and therefore is an empty unit. No driver can be retro fitted inside, this is for decorative purposes only.

• **Driver Box Dimensions:** L450mmx W27.5mmxH58mm

The driver box allows for the option of the driver to be located and hidden within the profile itself. Alternatively the driver can be located up to 10-meters away from the Magtrak.

Any driver box can be placed anywhere along the track.

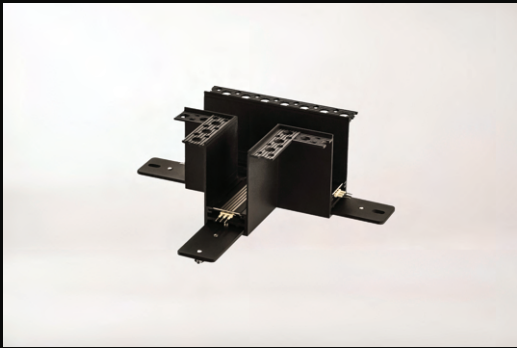
# Recessed Corners

## Recessed.L



• L70.5mm x L70.5mm x W 27.5mm x H58.5mm

## Recessed.T



• L100mm x L64mm x W 27.5mm x H58.5mm

# Recessed Corners

## Inner Recessed.L



• L104mm x L104mm x W 27.5mm x H58.5mm

## Outer Recessed.L



• L104mm x L104mm x W 27.5mm x H58.5mm

# Surface Corners

## Surface.L



• L70.5mm x L70.5mm x W 27.5mm x H58.5mm

## Surface.T



• L100mm x L64mm x W 27.5mm x H58.5mm

# Surface Corners

## Inner Surface.L



• L104mm x L104mm x W 27.5mm x H58.5mm

## Outer Surface.L



• L104mm x L104mm x W 27.5mm x H58.5mm



# Pendant Kits

## Pendant Kit.A



Cable Length - 1.2m

## Pendant Kit.B



Cable Length - 1.2m

## Pendant Kit.C



Cable Length - 2m

**Suspension.**

For suspended Magtrak, we offer three types of support kits. Pendant Kit A provides power to the Magtrak system, whilst Pendant Kit B & C are for support only.

We recommend a minimum of 2 supports for every 2m length of straight profile.

**Design Your Magtrak.**



# 1

## Choose Your Profile.

The Magtrak system offers 3 different types of profile, for whatever design needs.

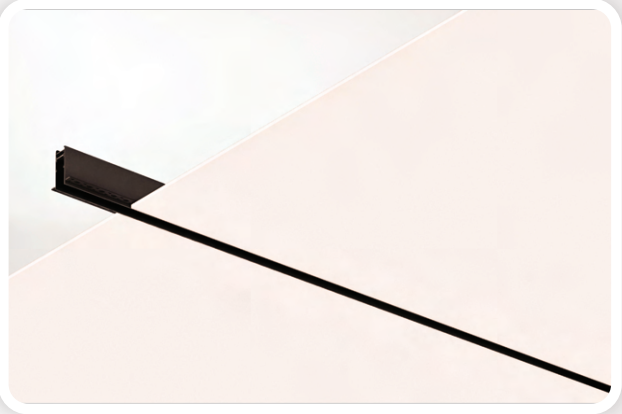
### Recessed

### Surface

### Suspended

Profile lengths are available in 1m or 2m, suitable for any size interior space. Please note a suspended Magtrak system requires a relevant pendant kit.

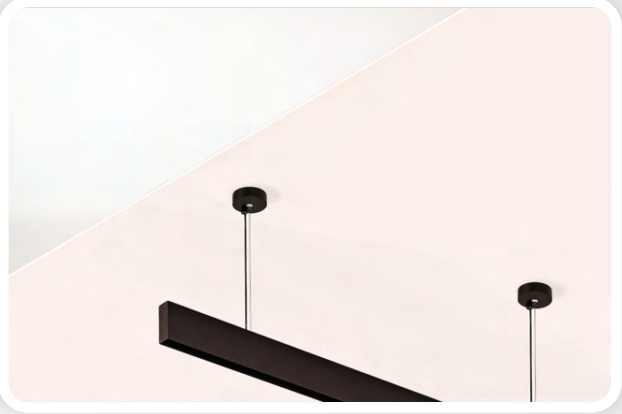
### Recessed.



### Surface.



### Suspended.



# 2



## Choose Your Formation.

The Magtrak system allows you to create any design possible, whilst offering a seamless connection for enhanced overall aesthetics.

There are **8 different** types of connectors to choose from, depending on the installation method. Sharp 90° corners allow the track to run across any surface possible, creating endless formations.

For pendant installation we offer three type of support kits, **Pendant Kit.A** provides power to the Magtrak system whilst **Pendant Kit.B & C** is for support only.

Please note **surface clips** are essential when mounting the Magtrak system directly onto the ceiling.

To complete the seamless look of the Magtrak system, **end caps** should be fixed to the end, to close off the system.

# 3

## Choose Your Control Method.

Our Magtrak system offers two main control methods, **TRIAC** or **DALI** dimming.

**TRIAC** dimming is an energy-efficient and adaptable lighting solution that provides seamless dimming performance, customisable lighting levels, and compatibility with existing wiring systems. It offers substantial energy savings, enhances user comfort and ambience, and simplifies installation and retrofitting processes.

**DALI** dimming is a precise solution for advanced lighting control, ensuring seamless adjustments in light levels without flickering. With individual control of each fixture, customers get unparalleled flexibility and customisation options. DALI dimming also supports advanced lighting management features such as scheduling, scene setting, and occupancy sensing, promoting energy efficiency and reducing operating costs.



**TRIAC**



**DALI**



## Choose Your Driver Location.

There are two options when it comes to the Magtrak driver, and where it can be placed, depending on preference.

We offer a driver box so the driver can be placed directly on the track. With both a recessed driver box, and a surface driver box, the box is suitable for any installation type. The driver box matches the profile to ensure a seamless integration. A Magtrak cover can be purchased to further integrate the driver box to the profile.

Please note, the driver box can only be placed at the start/end of the track system.

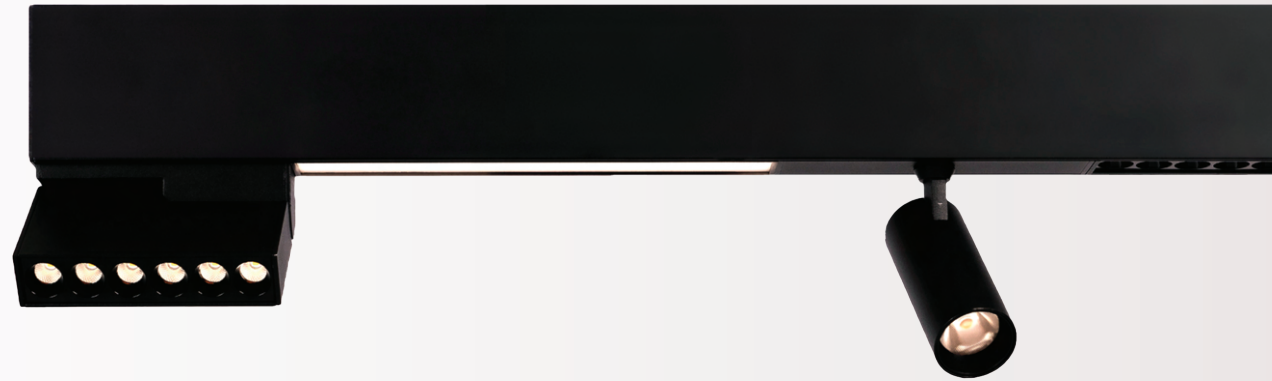
Alternatively the driver can be placed in a remote location, for example in a central circuit box or cabinet. Please note that the driver should always be accessible in case it needs to be replaced. We recommend no more than 10m away from the system.

## Choose Your Modules.

With Magtrak, any vision for your lighting design can come to life. Each Magtrak magnetic LED light module is equipped with a high-quality integrated LED light source to provide unique and consistent light distribution.

The light modules are magnetically attached to the tracks, allowing easy installation without the need for any tools. The low voltage of the system enables the light modules to be positioned and moved even when the power is on. When the light modules connect magnetically to the rail, they are instantly powered and start working. Installing the light modules is as easy as a simple 'click'.

We offer 15 different modules in our range, covering all specific light applications. From spotlights to linear lighting, and even a pendant, there is a module for any lighting requirement.





**Lighting of London**

Worlds End Studios

London

SW10 0RJ

+(44) 020 7139 5129



LIGHTING OF LONDON