

## Installation Instructions



LIGHTING OF LONDON

# Snug

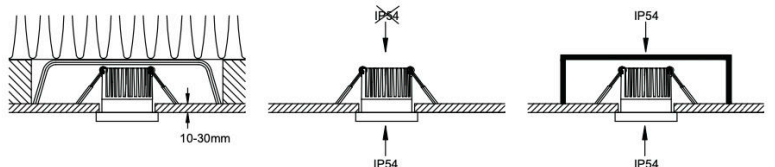
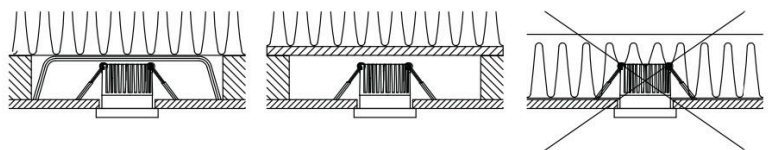
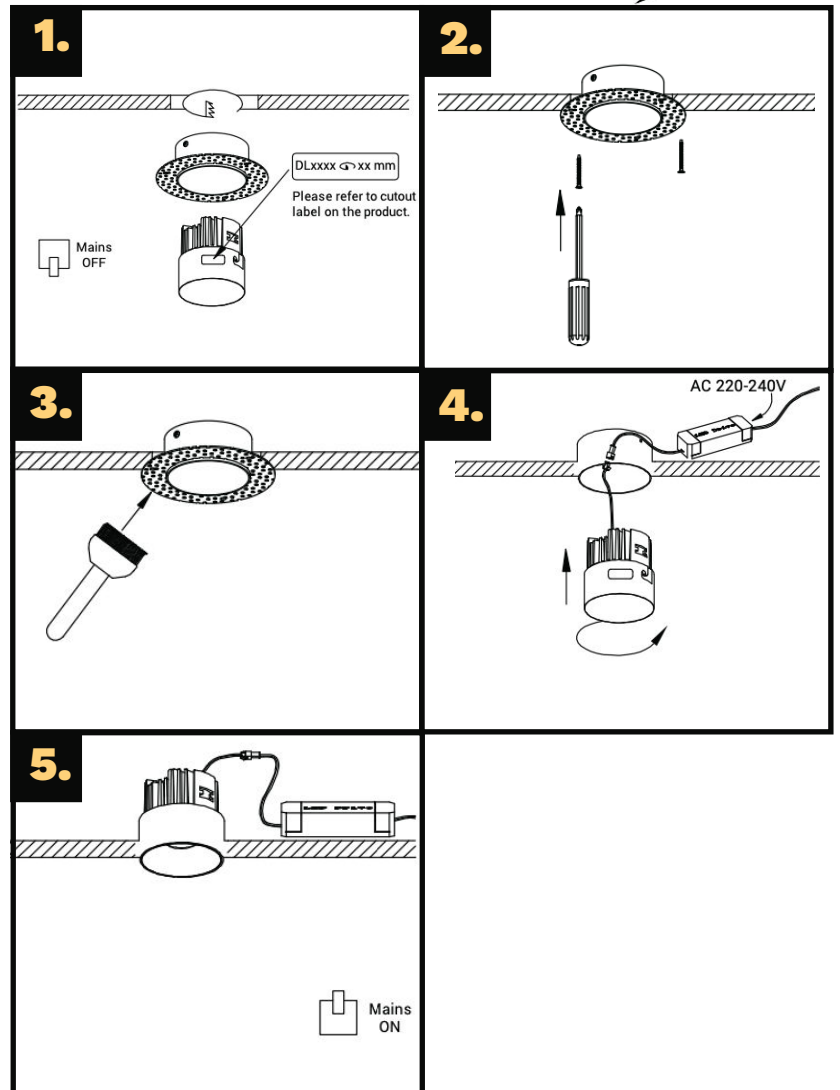
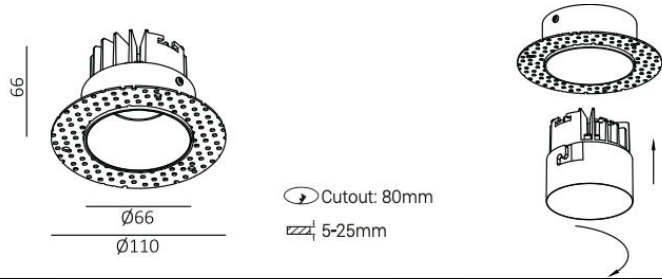


+(44) 020 7139 5129



enquiries@lightingoflondon.co

**WARNING: Please ensure all power is off before installation.**



### Caution

- The fittings must be installed, connected, and tested by a qualified electrician. Avoid using them in areas that receive direct sunlight, rain/moist conditions, or around corrosive gases. This will ensure the lamps do not fail or cause electrical leakage.
- Please ensure all power is off before installation and maintenance.
- The light can not be covered by an insulation layer or similar material
- The surface of the fitting should be maintained regularly. To do this use a soft cloth and soapy water. Do NOT use abrasive materials
- To prevent electric shock or fire, do not alter the fittings structure or the mode of wire connection. If the lamp is behaving abnormally, cut off power quickly.
- Improper installation, use, or maintenance of the fitting, or replacing parts with third party ones will invalidate its warranty period

### Warning

The fitting must not be installed on a combustible surface, or where there is explosive gas, or liquid, or dust.

