

**Beautifully
Bespoke.**



**A Whole World of
Lighting Possibilities.**





Custom Ceramic Coating.

At Lighting of London, we opt for ceramic coating for our products because of the significant advantages it offers our partners. Unlike traditional powder coating, ceramic coatings form a strong, semi-permanent bond with the surface, creating a durable barrier against environmental contaminants, UV rays, and chemical damage. This results in extended protection for the light fittings' paintwork, maintaining its glossy

finish and vibrant colour for years.

Additionally, ceramic coatings offer hydrophobic properties, which cause water to bead and roll off effortlessly, reducing the risk of water spots and making cleaning significantly easier. With its ability to withstand harsh conditions and provide long-lasting protection, ceramic coating proves to be the superior choice

for preserving the appearance and increasing the aesthetic longevity of light products compared to other coating options.

Inspired by the spectrum of colours found throughout nature, we offer over 100 different options for ceramic coating colours. From the brightest pink to the softest grey, every colour preference is catered for.

H-Series.

The perfect coating choice for products intended for interior application.



Product: **Follow Me.S**

Coating: **H-122**



Adore.

Our Adore collection has been meticulously crafted to draw inspiration from the raw beauty and elegance of natural ores. The collection boasts a range of luxurious colours that are reminiscent of the precious minerals found in nature.

The tones of gold, copper, and platinum have been carefully

selected to cater to designers who seek to create an opulent ambiance in their lighting designs.

Each colour in the Adore collection has been crafted with the utmost care and attention to detail, ensuring that they add a touch of sophistication and glamour to any space they are used in.

Cobalt



H-112

Brass



H-122

Burnt Bronze



H-148

Copper Brown



H-149

Satin Aluminium



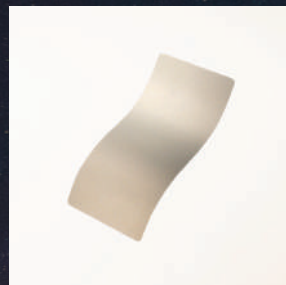
H-151

Stainless



H-152

Bright Nickel



H-157

Shimmer Aluminium



H-158

Titanium



H-170

Tungsten



H-237

Barrett Bronze



H-259

Vortex Bronze



H-293

Midnight Bronze



H-294

Copper Suede



H-310

Rose Gold



H-327

Copper



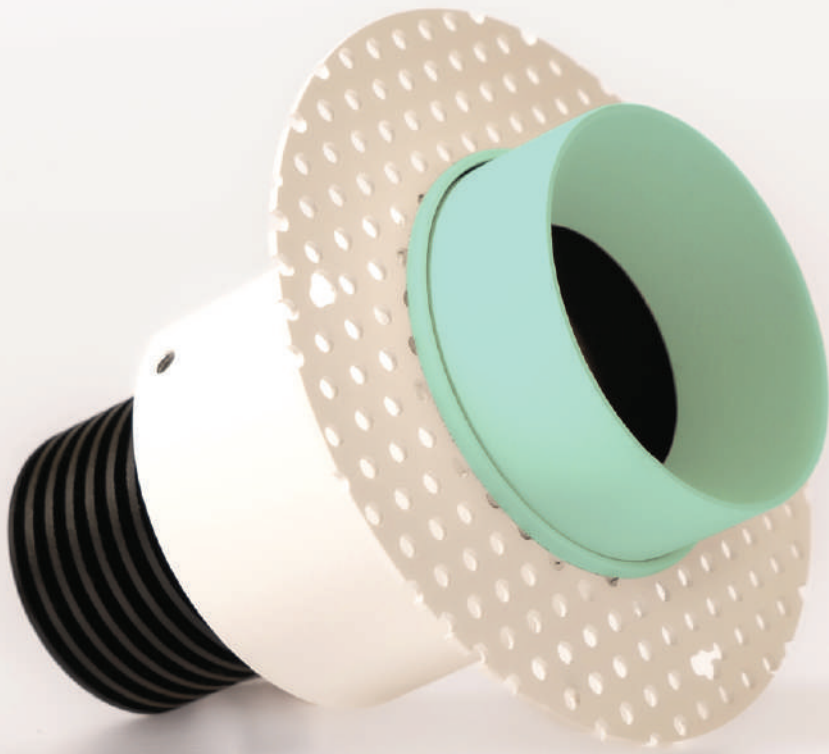
H-347

Smoked Bronze



H-359

Product: **Peep**
Coating: **H-175**



Atmos.

The Atmos palette is a captivating collection of colours that draws inspiration from the phrase "the sky is the limit". Just like the sky above, the palette offers a wide range of delightful shades of blue, violet, and purple that are perfect for creating an ambiance of serenity and tranquility.

Whether you're looking to add a touch of vibrancy to your

living space or create a soothing atmosphere in your bedroom, the Atmos palette is designed to cater to your needs.

The shades of blue in the palette are carefully selected to evoke a sense of calmness, balance, and harmony, making it the perfect choice for those who appreciate the beauty and serenity of blue hues.

Navy Blue



H-127

Sky Blue



H-169

NRA Blue



H-171

Sea Blue



H-172

Robin Egg Blue



H-175

Blue Titanium



H-185

Wild Purple



H-197

Bright Purple



H-217

Ridgeway Blue



H-220

Crushed Orchid



H-314

Northern Lights



H-315

Polar Blue



H-326

Blue Raspberry



H-329

Aztec Teal



H-349

Ice Blue



H-356

Periwinkle



H-357

Patriot Blue



H-362

Civil Defense Blue



H-401

Product: **Uno**
Coating: **H-224**



Dawn.

The magical moment of dawn is a spectacle of colours synonymous with the onset of illumination. The sky is painted with some of the most vivid and eye-catching hues, each day bringing a new, unique dawn with its own set of colours.

Our Dawn colour palette cap-

tures the essence of this magical moment, featuring warm, radiant, and soothing shades of pink, orange, and yellow.

The colours in this palette are carefully chosen to evoke the emotions of hope, freshness, optimism, and rejuvenation that accompany the break of dawn.

Hunter Orange



H-128

Prison Pink



H-141

Corvette Yellow



H-144

Electric Yellow



H-166

USMC Red



H-167

Firehouse Red



H-216

Crimson



H-221

Sig Pink



H-224

Bazooka Pink



H-244

Ruby Red



H-306

Tequila Sunrise



H-309

Pink Champagne



H-311

Sunflower



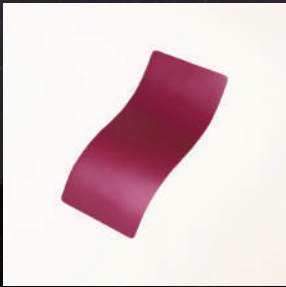
H-317

Habanero Red



H-318

Black Cherry



H-319

Cranberry Frost



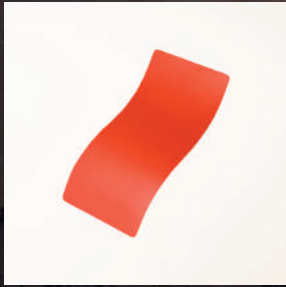
H-320

Blush



H-321

Blood Orange



H-322

Pink Sherbert



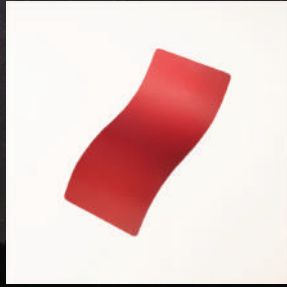
H-328

Purplexed



H-332

Sedona



H-333

Hi-Vis Orange



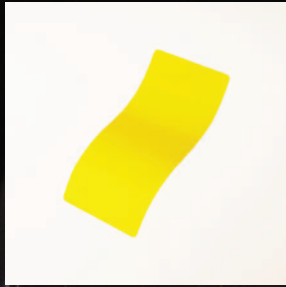
H-346

Sangria



H-348

Lemon Zest



H-354

Product: **Hide**
Coating: **H-142**



Dune.

The serene, natural tones of the desert, with its vast expanse of sand stretching out as far as the eye can see, have provided the guiding inspiration for Dune.

The warm, inviting shades of sand that dominate the landscape form the ideal backdrop

for creating a strong and compelling design.

The warm finishes used in the design evoke a sense of coziness and comfort, perfectly complementing the natural warmth of the light emitted from our fittings.

Light Sand



H-142

Benelli Sand



H-143

Tiger Eye Brown



H-187

Desert Sand



H-199

McMillan Tan



H-203

Mud Brown



H-225

Coyote Tan



H-235

Desert Sage



H-247

Desert Verde



H-256

Flat Dark Earth



H-265

Hematite



H-267

Troy Coyote Tan



H-268

Barrett Brown



H-269

Sahara



H-8000

Quartz Sand



H-30372

Sabre Sand



H-33446

Product: **Blade**
Coating: **H-360**



Fern.

Creating an outdoor area with a cohesive and integrated look can be difficult, especially when it comes to lighting. However, our Fern palette offers a solution that is both practical and visually appealing.

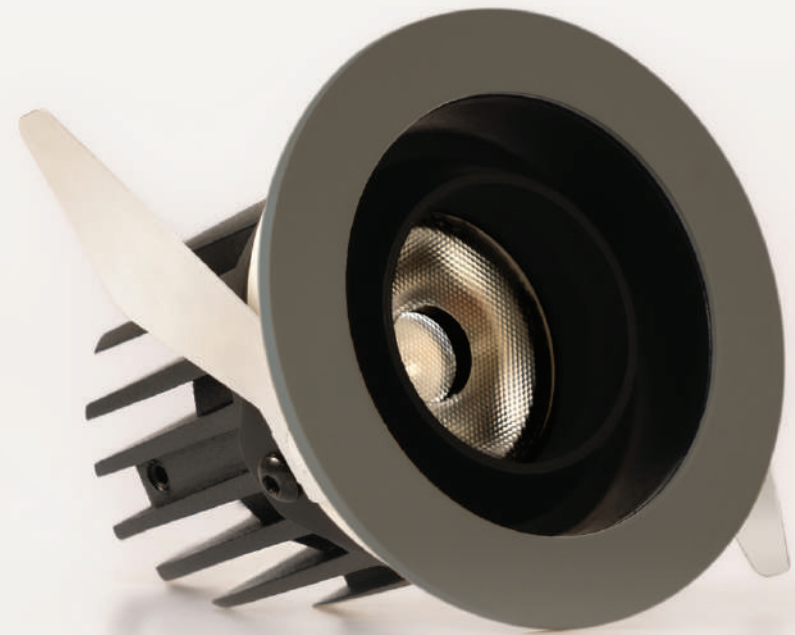
With a range of green and brown shades to choose from, our light fittings can blend seamlessly into any surround-

ing foliage, giving your outdoor area a harmonious and natural appearance.

Whether you want to create a relaxing ambiance on a patio or illuminate a pathway through your garden, our Fern palette can help your lighting fixtures blend in with the surrounding environment like never before.

Zombie Green 	Bazooka Green 	Highland Green 	Hazel Green 	Federal Brown 	Patriot Brown 	Sniper Green 
H-168	H-189	H-200	H-204	H-212	H-226	H-229
Foliage Green 	M.O.D. Green 	O.D. Green 	Mil Spec O.D. Green 	Forest Green 	A.I Dark Earth 	Chocolate Brown 
H-231	H-232	H-236	H-240	H-248	H-250	H-258
Glock FDE 	Mil Spec Green 	Cobalt Kinetics Green 	Plum Brown 	Springfield FDE 	Squatch Green 	Parakeet Green 
H-261	H-264	H-296	H-298	H-305	H-316	H-331
Charcoal Green 	MC Pale Green 	MC Light Green 	MC Dark Green 	MC Dark Brown 	MC Bright Green 	MC Olive 
H-338	H-339	H-340	H-341	H-342	H-128	H-344
Green Mamba 	Island Green 	Crocodile 	Eastern Front 	FS Field Drab 	FS Green 	
H-351	H-353	H-360	H-400	H-30118	H-34094	

Product: **Aim.70**
Coating: **H-130**



Haze.

The Haze palette takes its inspiration from the delicate nuances of grey that form the essence of mist and fog.

It comprises a carefully curated collection of shades, each with its own unique depth and undertone, resulting in a rich and nuanced color palette that is perfect for creating a contemporary and architec-

tural aesthetic.

Whether you're looking to add a touch of sophistication to an interior design or create a sleek and modern look in an office space, the Haze palette offers a stunning array of options that are sure to impress. With its subtle and sophisticated shades, this palette is sure to inspire.

Combat Grey



H-130

Steel Grey



H-139

Satin Mag



H-147

Savage Stainless



H-150

Glock Grey



H-184

Sig Dark Grey



H-210

Battleship Grey



H-213

Bull Shark Grey



H-214

Gun Metal Grey



H-219

Tactical Grey



H-227

Sniper Grey



H-234

Crushed Silver



H-255

Stone Grey



H-262

Cobalt Slate



H-295

Platinum Grey



H-337

Dark Grey



H-345

Cold War Grey



H-402

Product: **Seek**
Coating: **H-109**



Nox.

Named after the Roman Goddess of Night, the Nox palette draws its inspiration from the mysterious and captivating colours of the night. The palette showcases the depth and intrigue that black and white can bring, with every shade chosen to evoke a sense of mystery and wonder.

The monochromatic colours of the Nox palette are timeless, subtle, and adaptable, making them perfect for en-

hancing minimalist designs. The shades highlight clean finishes and integrated beauty, adding a touch of sophistication and elegance to any design.

Each shade in the Nox palette has been carefully selected to complement the other, creating a harmonious blend of tones that can be used together or as stand-alone hues to bring depth and character to any design project.

Gloss Black



H-109

Snow White



H-136

Bright White



H-140

Graphite Black



H-146

Stealth



H-188

Armor Black



H-190

Midnight Blue



H-238

Hidden White



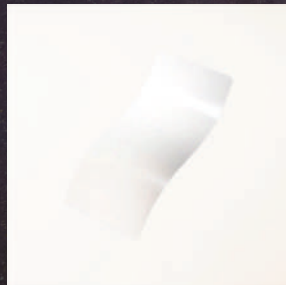
H-242

Socom Blue



H-245

Stormtrooper



H-297

Springfield Grey



H-304

Frost



H-312



C-Series.

The perfect coating choice for products intended for exterior application.

Product: **Lunar**
Coating: **C-215**



Terra.

The Terra colour palette is designed exclusively for products intended to be installed outdoors. Ceramic coating is the superior coating choice for exterior applications, due to its hardwearing nature.

Protecting against UV rays, you can ensure the longevity of the chosen colour for your products. Additionally, ceramic coatings offer hydrophobic properties, which cause water to bead and roll off effortlessly, reducing the risk of water spots and making cleaning significantly easier.

With its ability to withstand harsh conditions and provide long-lasting protection, ceramic coating is the superior choice for preserving the appearance and increasing the aesthetic longevity of light products compared to other coating options.

With a range of colours to choose from, the choice to have your fittings blend seamlessly in an exterior environment, or to stand boldly against a natural backdrop, is entirely your own.

Graphite Black

C-102

Titanium

C-105

Lavender Haze

C-110

Tungsten

C-111

Cobalt

C-112

Satin Nickel

C-124

Hunter Orange

C-128

Stainless

C-129

Jet Black

C-138

Bright White

C-140

Stoplight Red

C-143

Burnt Bronze

C-148

Blue Flame

C-158

Lollipop Purple

C-163

Piston Coat

C-186

Transfer Grey

C-187

Blue Titanium

C-189

Coyote

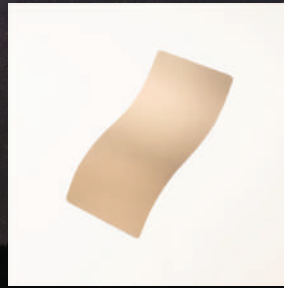
C-190

Armor Black

C-192

Dark Grey

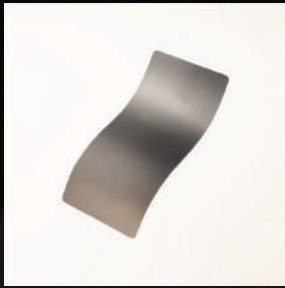
C-209

Desert Sand

C-211

Highland Green

C-215

Gun Metal Grey

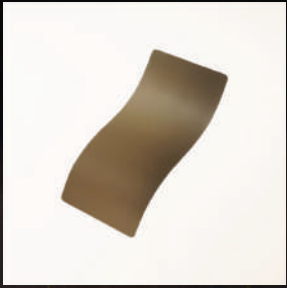
C-219

Patriot Brown

C-226

Tactical Grey

C-228

Foliage Green

C-231

OD Green

C-232

Sniper Grey

C-239

Coyote Tan



C-240

OD Green



C-241

Hidden White



C-242

Mil Spec OD Green



C-244

Flat Dark Earth



C-246

Magpul FDE



C-267

Vortex Bronze



C-293

Aqua Teal



C-297

Black Cherry



C-298

Deep Blue



C-299

Lemon Zest



C-300

Black Velvet



C-7300

Glacier Black



C-7600

Glacier Silver



C-7700

Glacier Gold



C-7800

Glacier Titanium



C-7900

Glacier Forge



C-8200

FS Field Drab



C-30118

Lighting of London

Worlds End Studios

London

SW10 0RJ

+(44) 020 7139 5129



LIGHTING OF LONDON