




DESIGN PACK .





*"exceptional lighting isn't accidental - it is designed."*

Steve Noyes | Founder and Director

## Design With Lighting of London .

You might be wondering why you should choose Lighting of London for your lighting design. It may seem counterintuitive to trust a manufacturer with such an important aspect as light placement. But that's precisely why you can rely on us.

We manufacture all of our lights with lighting design in mind. From the initial concept to the final product, each fitting is created with a specific purpose in mind. Who better to understand how to utilise them than the company that created them?

With over 30 years of design experience, our team is dedicated to working on some of the most prestigious projects. We create tailor-made designs for each project—there are no generic grid formats here. This

commitment has earned Lighting of London a reputation for producing exceptional lighting designs that are timeless classics.

We focus on a blend of creativity with technical expertise, carefully considering architecture, interior design, and the story behind every project.

So, why choose Lighting of London for your lighting design?

Because we understand how our products should be used.

Because we have the expertise.

Because everyone deserves beautiful lighting.



**Lighting Design Pack Expectations .**

### **Detailed Product Specification .**

We clearly state on the design which of our products, along with the CCT and beam angle, we would specify in each area, allowing the design to translate seamlessly to reality.

### **Placement Visualisation .**

The 2D and 3D callouts we include, help our lighting design come to life. These callouts allow the on-site trades to visualise precisely the placement of our light fittings.

### **Driver Specification .**

Time spent calculating what driver for each circuit is time better spent on the project. Thats why we break down which driver should be used for each circuit, for a quicker wiring process.

### **Circuit Schedule .**

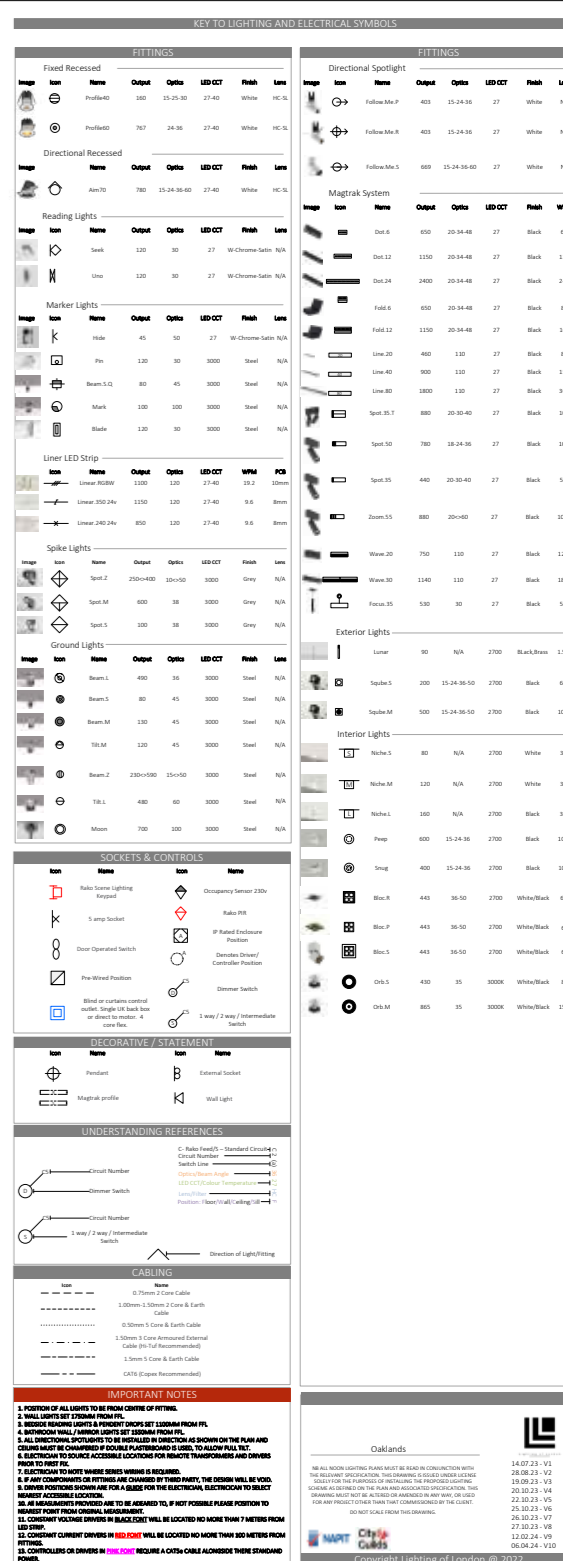
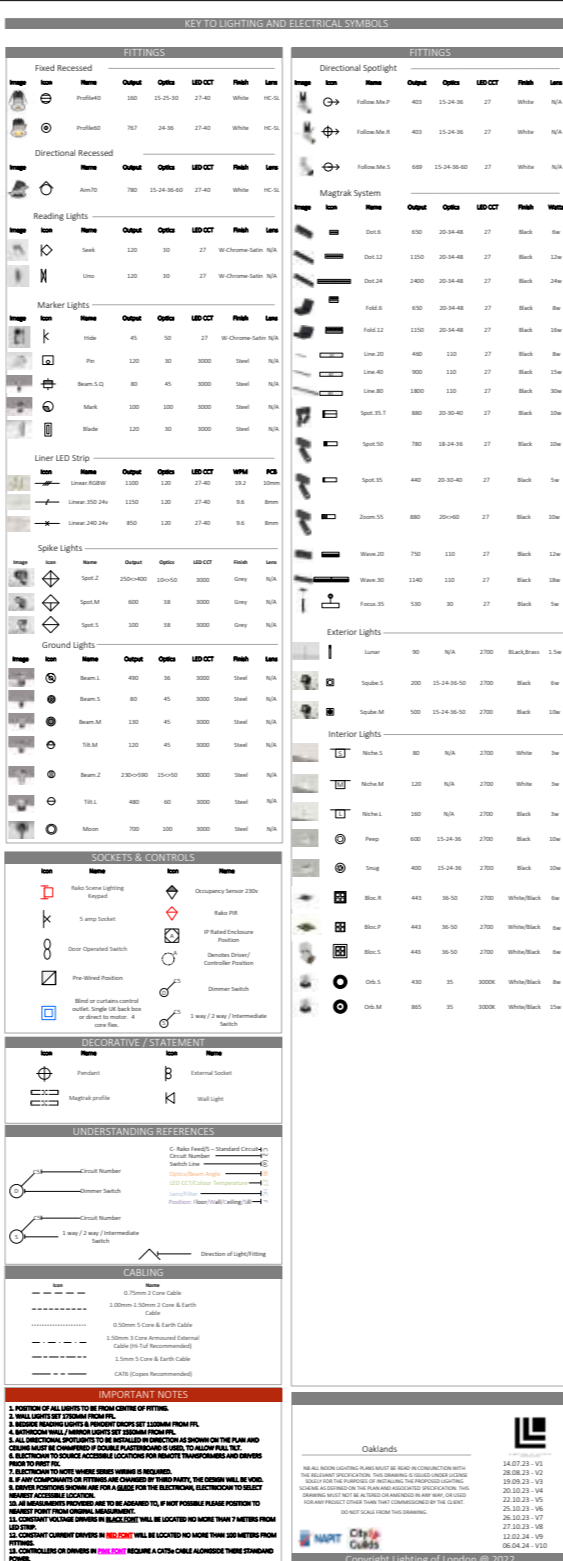
Each design includes a detailed circuit schedule, providing an overview of each circuit. Not only does detailing the overall circuit load help with electrical design, but also with overall power consumption .





**Lighting Design Outcomes.**


OAKLANDS.





### IMPORTANT NOTES

1. POSITION OF ALL LIGHTS TO BE FROM CENTRE OF FITTINGS.
2. WALL LIGHTS SET 1500MM FROM PPL.
3. READING HEADS LIGHTS & PENDENT DOWN LIGHTS 1500MM FROM PPL.
4. BATHROOMS & KITCHENS LIGHTS SET 1500MM FROM PPL.
5. ALL DOWNLIGHTS SPOTLIGHTS TO BE INSTALLED IN DIRECTIONS AS SHOWN ON THE PLAN AND IN ACCORDANCE WITH THE LIGHTING SPECIFICATION TO ALLOW FULL EFFECT.
6. ELECTRICITY TO LOCATE ACCESSIBLE LOCATIONS FOR IMMEDIATE TRANSFORMERS AND DRIVERS PRIOR TO FIRST FIX.
7. ELECTRICITY TO NOTE WHERE SERIES WIRES IS REQUIRED.
8. IF ANY COMPANIES OR FITTINGS ARE CHANGED BY THIRD PARTY, THE DESIGN WILL BE VOID.
9. DOWN LIGHT POSITIONS SHOWN ARE FOR A GUIDE FOR THE ELECTRICALS, ELECTRICIAN TO SELECT THE APPROPRIATE DOWN LIGHTS TO BE USED.
10. ALL MEASUREMENTS PROVIDED ARE TO BE ADHERED TO, IF NOT POSSIBLE PLEASE POSITION TO NEAREST POINT FROM ORIGINAL MEASUREMENT.
11. ALL DOWNLIGHTS & DOWN LIGHTS IN BLACK ZONE WILL BE LOCATED NO MORE THAN 7 METERS FROM LED STRIP.
12. ALL DOWNLIGHTS CURRENT DOWN LIGHTS IN **RED ZONE** WILL BE LOCATED NO MORE THAN 300 METERS FROM FITTINGS.
13. CONTROLLERS OR DIMMERS IN **RED ZONE** REQUIRE A CATHA CABLE ALONGSIDE THEIR STANDARD CABLES.








**Oklands**

NO ALL NIGHT LIGHTING PLANS MUST BE READ IN CONJUNCTION WITH THE RELEVANT DISCREETION. THIS DRAWING IS ISSUED UNDER A LICENSE FOR THE PURPOSES OF PREPARING THE PROPOSED LIGHTING SCHEME AS DEFINED ON THE PLAN AND ASSOCIATED SPECIFICATION. THIS DRAWING MUST NOT BE ALTERED OR AMENDED IN ANY WAY, OR USED FOR ANY PROJECT NOT THAT COMMISSIONED BY THE CLIENT.

DO NOT SCALE FROM THIS DRAWING.

**NAPT City of Glendale**

**Contract Lighting of London 01 7322**

14.07.23 - V1  
26.08.23 - V2  
19.09.23 - V3  
20.10.23 - V4  
22.10.23 - V5  
25.10.23 - V6  
26.10.23 - V7  
27.10.23 - V8  
12.02.24 - V9  
06.04.24 - V10



### IMPORTANT NOTES

1. POSITION OF ALL LIMITS TO BE FROM CENTRE OF FITTING.
2. WALL LIMITS SET 170MM FROM FFL.
3. MEETED MACHINE LIMITS & PENDENT GROUND SET 130MM FROM FFL.
4. BATHROOM WALL LIMIT 750MM FROM FFL.
5. ALL ELECTRICAL SUPPLIES TO BE LOCATED IN DIRECTION AS SHOWN ON THE PLAN AND IN ACCORDANCE WITH THE ELECTRICAL SPECIFICATION.
6. ELECTRICALS TO SOURCE ACCESSIBLE LOCATIONS FOR REMOTE TROUBLESHOOTING AND DRIVERS FIRST TO AID KIT.
7. ELECTRICITY TO RITZ WHERE SERIES WIRING IS REQUIRED.
8. IF ANY COMPONENTS OR FITTINGS ARE CHANGED BY THIRD PARTY, THE DESIGN WILL BE VOID.
9. DRIVER POSITIONS SHOWN ARE FOR GUIDES FOR THE ELECTRICAL, ELECTRICIANS TO SELECT THE MOST APPROPRIATE POSITIONS.
10. ALL MEASUREMENTS PROVIDED ARE TO BE ADHERED TO, IF NOT POSSIBLE PLACE POSITION TO NEAREST POINT FROM ORIGINAL MEASUREMENT.
11. CORNER VOUCHER DRIVERS IN BLACK COT WILL BE LOCATED NO MORE THAN 7 METERS FROM LEAD STOP.
12. CURRENT CURRENT DRIVERS IN **RED** COT WILL BE LOCATED NO MORE THAN 100 METERS FROM FITTINGS.
13. CONTROLLERS OR DRIVERS IN **RED** COT WILL REQUIRE A CAT5E CABLE ALONGSIDE THEIR STANDA

	<p><b>Oaklands</b></p> <hr/> <p>NB ALL NOON LIGHTING PLANS MUST BE READ IN CONJUNCTION WITH THE RELEVANT SPECIFICATION. THIS DRAWING IS ISSUED UNDER LICENSE TO SUPPORT THE PURPOSES OF INSTALLING THE PROPOSED LIGHTING SCHEME AS SET OUT ON THE PLAN AND ASSIGNED SPECIFICATION. THIS DRAWING MUST NOT BE ALTERED OR HANDLED IN ANY WAY. GO LIT FOR ANY PROJECT OTHER THAN THAT COMMISSIONED BY THE CLIENT.</p> <p>DO NOT SCALE FROM THIS DRAWING.</p>	 <b>GO LIT</b> <small>ILLUMINATION LTD</small>	14.07.23 - V1 28.08.23 - V2 13.09.23 - V3 22.10.23 - V4 25.10.23 - V5 26.10.23 - V6 27.10.23 - V7 12.02.24 - V8 06.04.24 - V10
--	--	--	--





# BURDA



<

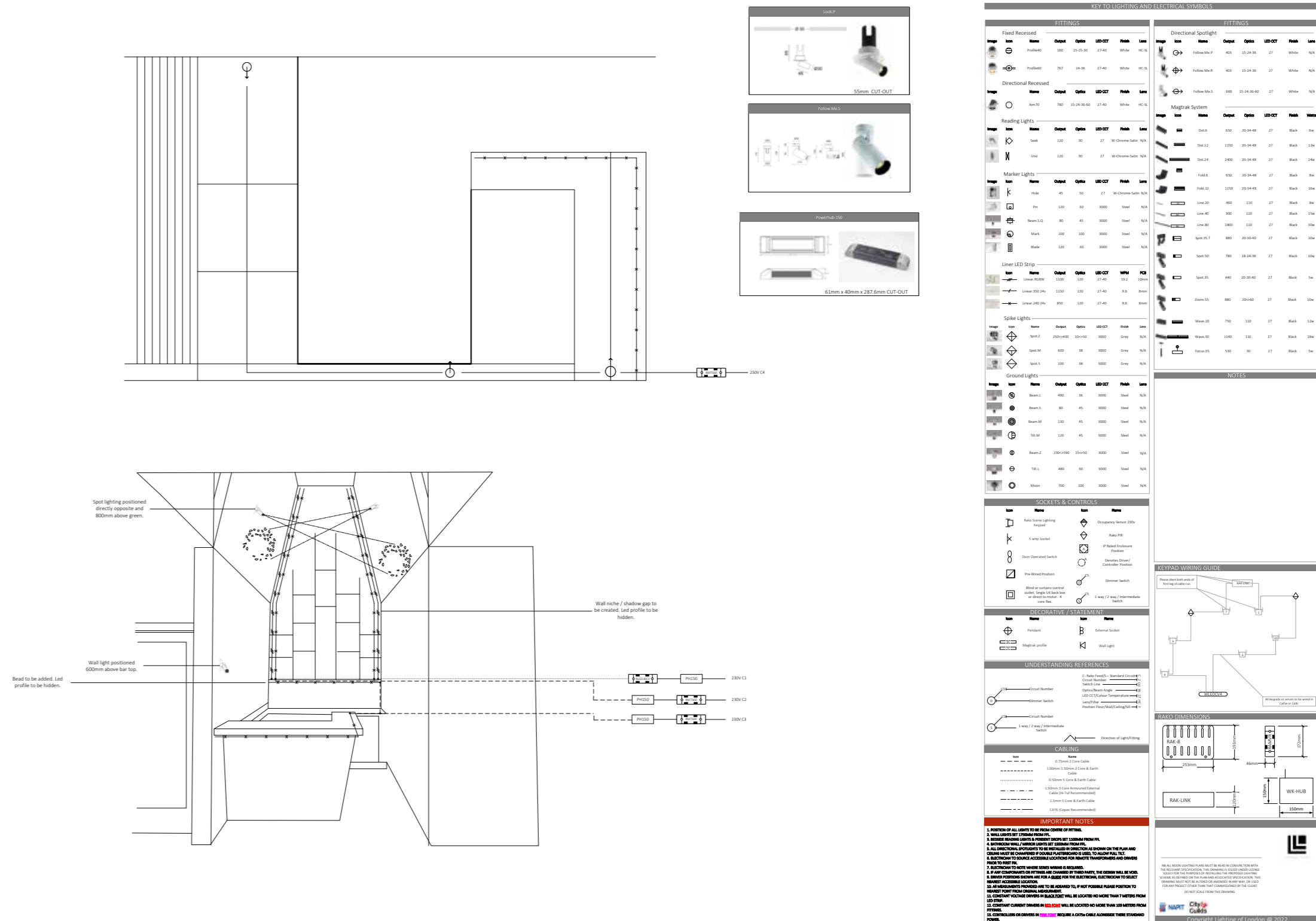
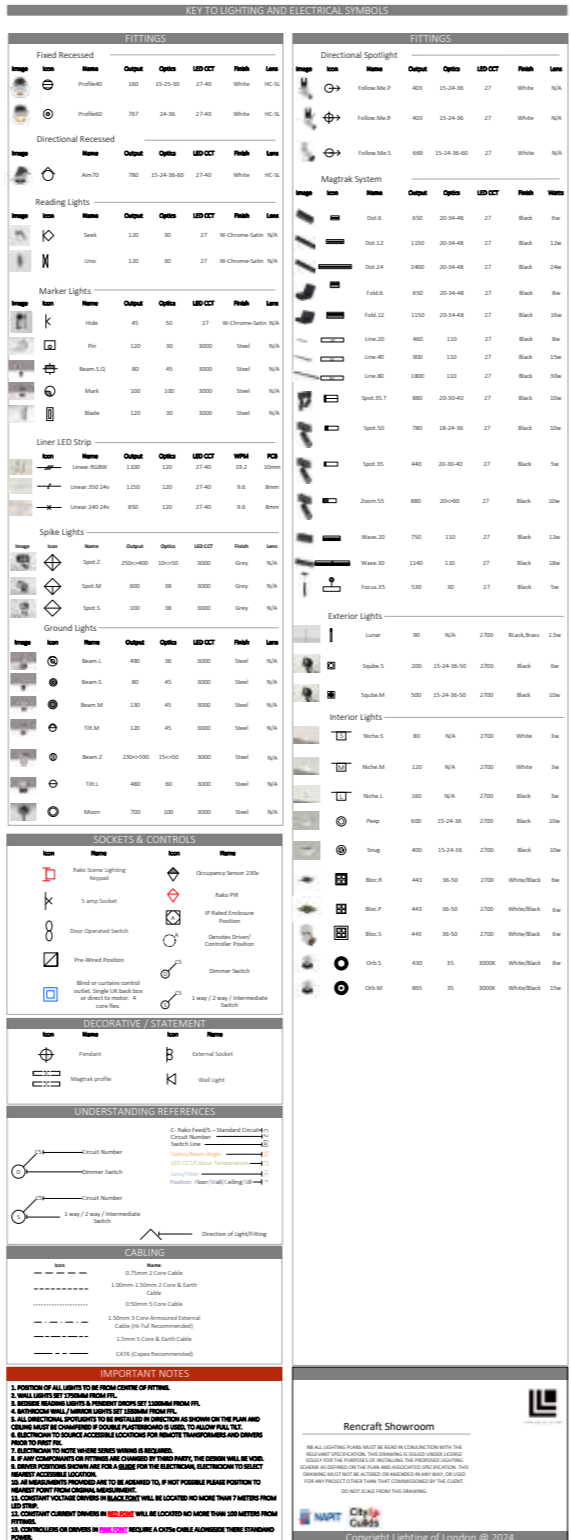
[illegible]






# REINCRATE











*"lighting should be used to enhance, not to overpower"*

Steve Noyes | Founder and Director

