



CUSTOM COATING.



Our Products . Your Way

IN PARTNERSHIP WITH





What Is Ceramic Coating.

Ceramic coating is a liquid polymer solution that is applied over a product's paint through a chemical bonding process. Once the coating cures, it forms a protective layer that enhances gloss, repels water and dirt, and protects against UV rays, chemical stains, and environmental contaminants. When properly maintained, the coating can be effective for several years – substantially outlasting more traditional coating methods.

Benefits of Ceramic Coating.

Up to **3X** more resistant to scratches than powder coating

Up to **2X** more of a thinner coating, to maintain product functionality

Up to **50%** more UV and water damage resistant than powder coating

Up to **3X** more resistance to corrosion and chemical damage

Over **200** colours to choose from for perfect colour matching



FOLLOW ME.P IN H-338

H-Series

THE SUPERIOR COATING CHOICE FOR INTERIOR APPLICATION





ADORE.

Our Adore collection has been crafted to reflect the raw beauty and elegance of natural ores. The collection is a range of luxurious colours that are reminiscent of the precious minerals found

in nature. The tones of gold, copper, and platinum have been carefully selected to cater to designers who seek to create an opulent ambiance in their lighting designs.



COBALT
H-112



GOLD
H-122



BURNT BRONZE
H-148



COPPER BROWN
H-149



SATIN ALUMINIUM
H-151



STAINLESS
H-152



BRIGHT NICKEL
H-112



SHIMMER ALUMINIUM
H-170



TITANIUM
H-237



TUNGSTEN
H-259



BARRETT BRONZE
H-293



VORTEX BRONZE
H-294



MIDNIGHT BRONZE
H-316



COPPER SUEDE
H-112



ROSE GOLD
H-327



COPPER
H-347



SMOKED BRONZE
H-359

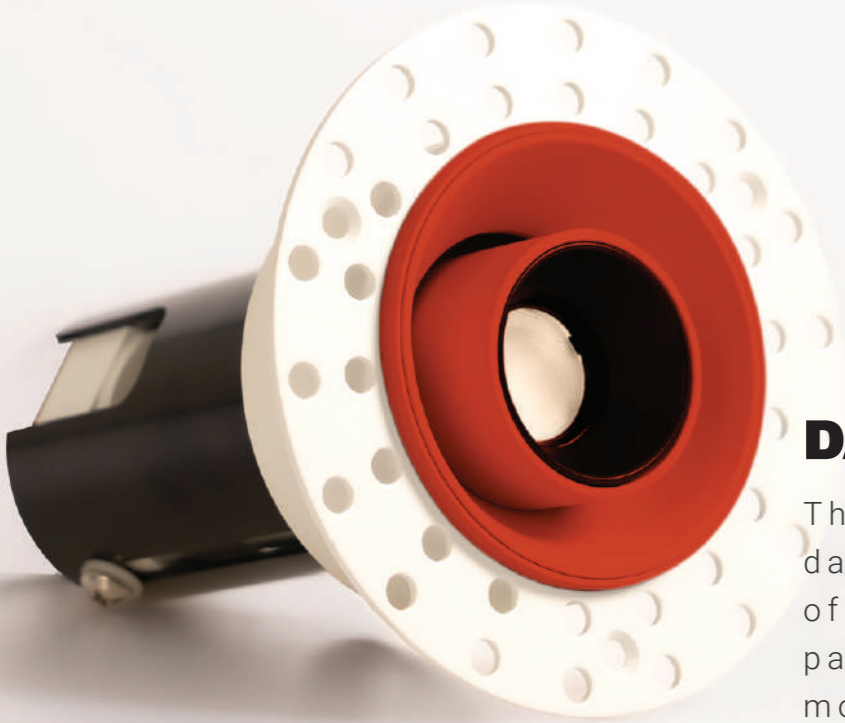


ATMOS.

The Atmos palette is a captivating collection of colours that draws inspiration from the sky. The palette offers a wide range of delightful shades of blue, violet, and purple that have

been carefully selected to evoke a sense of calmness, balance and harmony. Each shade is perfect for creating an ambiance of serenity and tranquility.





DAWN.

The magical moment of dawn is a true spectacle of colours. The sky is painted with some of the most vivid and eye-catching hues, each day bringing a new, unique dawn with its own

set of colours. Our Dawn colour palette captures the essence of this magical moment, featuring warm, radiant, and soothing shades of pink, orange, and yellow.



HUNTER ORANGE
H-128



PRISON PINK
H-141



CORVETTE YELLOW



ELECTRIC YELLOW
H-166



USMC RED
H-167



FIREHOUSE RED
H-216



CRIMSON
H-221



SIG PINK
H-224



BAZOOKA PINK
H-244



RUBY RED
H-306



TEQUILA SUNRISE



PINK CHAMPAGNE
H-317



SUNFLOWER
H-318



HABANERO RED
H-259



BLACK CHERRY
H-319



CRANBERRY FROST
H-320



BLUSH
H-321



BLOOD ORANGE
H-322



PINK SHERBERT
H-328



PURPLEPlexed
H-332



SEDONA
H-333



HI-VIS ORANGE
H-346



SANGIRA
H-348



LEMON ZEST
H-349



DUNE.

The serene, natural tones of the desert, with its vast expanse of sand stretching out as far as the eye can see, have provided the guiding inspiration for Dune.

The warm, inviting shades of sand that dominate the landscape form the ideal backdrop for creating a strong and compelling design.

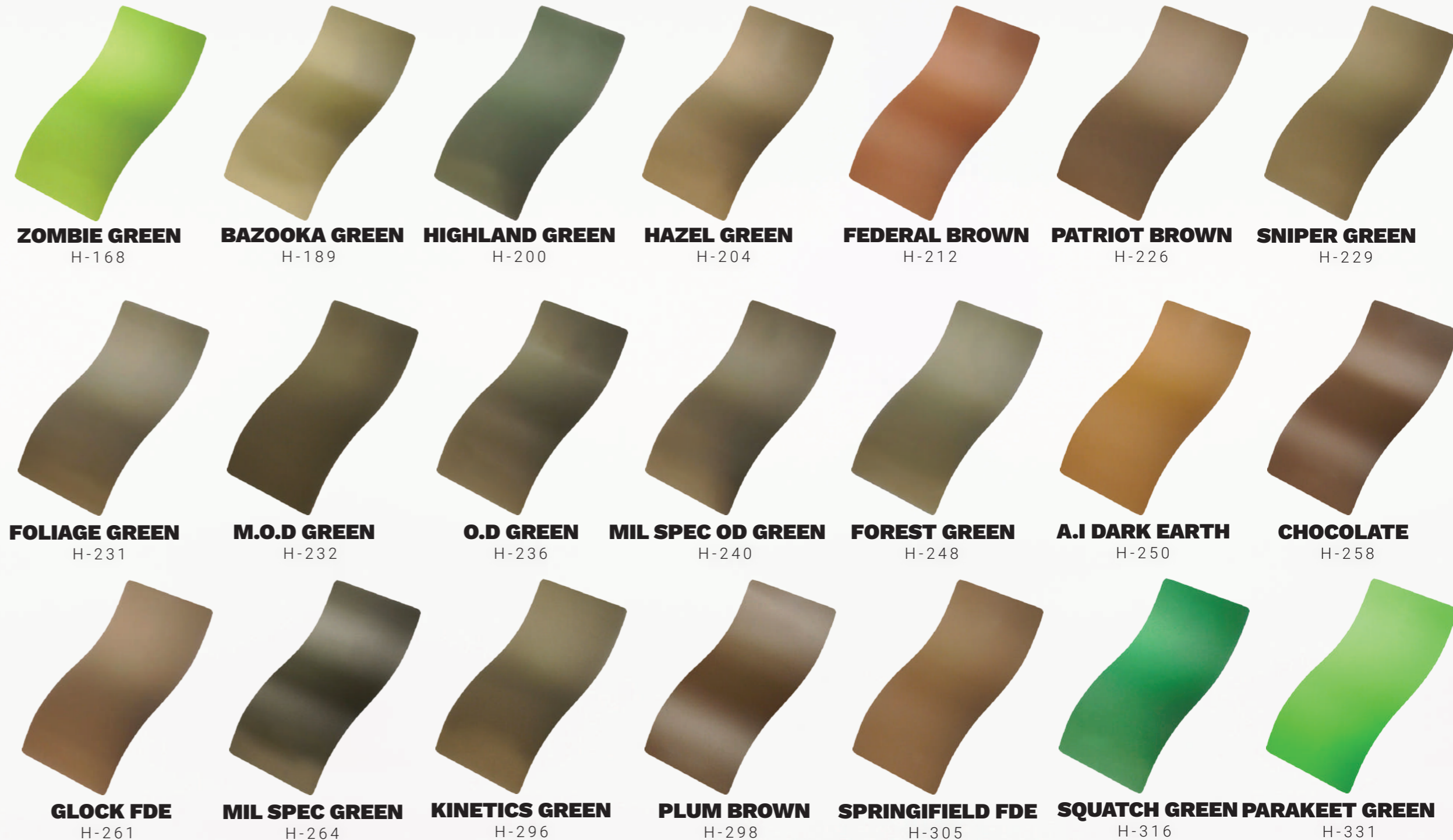




FERN.

Creating an outdoor area with a cohesive and integrated look can be difficult, especially when it comes to lighting. Our Fern palette offers a range of green and brown

shades to choose from, so our light fittings can blend seamlessly into any surrounding foliage, giving your outdoor area a harmonious and natural appearance.





MC OLIVE
H-344



MC BRIGHT GREEN
H-343



MC DARK BROWN
H-342



MC DARK GREEN
H-341



MC LIGHT GREEN
H-340



MC PALE GREEN
H-339



CHARCOAL GREEN
H-338



FS GREEN
H-34094



FS FIELD DRAB
H-30118



EASTERN FRONT
H-400



CROCODILE
H-360

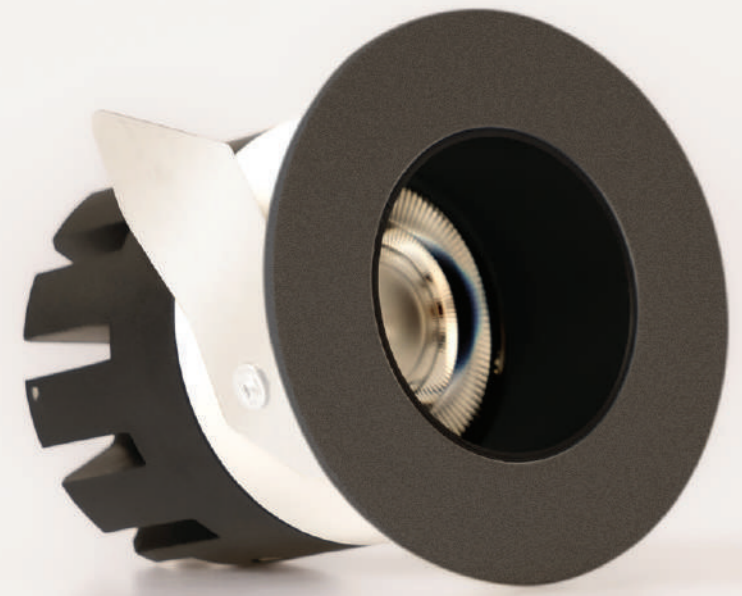


ISLAND GREEN
H-353



GREEN MAMBA
H-351





HAZE.

The Haze palette takes its inspiration from the delicate nuances of grey that form the essence of mist and fog. It comprises a carefully curated collection of shades, each with

its own unique depth and undertone, resulting in a rich and nuanced color palette that is perfect for creating a contemporary and architectural aesthetic.





NOX.

Named after the Roman Goddess of Night, the Nox palette draws its inspiration from the mysterious and captivating colours of the night. The palette showcases the depth and intrigue that black and white can bring, with every shade

chosen to evoke a sense of mystery and wonder. The monochromatic colours of the Nox palette are timeless, subtle, and adaptable, making them perfect for enhancing minimalist designs.



GLOSS BLACK
H-109



SNOW WHITE
H-136



BRIGHT WHITE
H-140



GRAPHITE BLACK
H-146



STEALTH
H-188



ARMOR BLACK
H-190



MIDNIGHT BLUE
H-238



HIDDEN WHITE
H-242



SOCON BLUE
H-245



STORMTROOPER
H-297



SPRINGFIELD GREY
H-304



FROST
H-312

SPOT.S IN C-105

C-Series.

THE SUPERIOR COATING CHOICE
FOR EXTERIOR APPLICATION





TERRA.

The Terra colour palette is designed exclusively for products intended to be installed outdoors. Protecting against UV rays, you can ensure the longevity of the chosen colour for your products. Additionally, ceramic coatings cause water to bead and roll off effortlessly, reducing the risk of water

spots and making cleaning significantly easier. With its ability to withstand harsh conditions and provide long-lasting protection, ceramic coating is the superior choice for preserving the appearance and increasing the aesthetic longevity of light fittings.



GRAPHITE BLACK
C-102



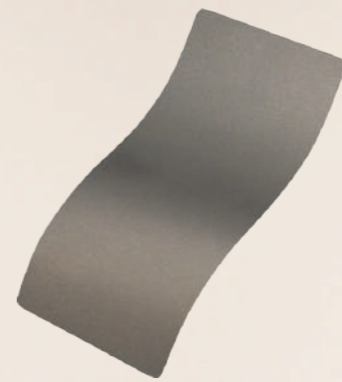
TITANIUM
C-105



LAVENDER HAZE
C-110



TUNGSTEN
C-111



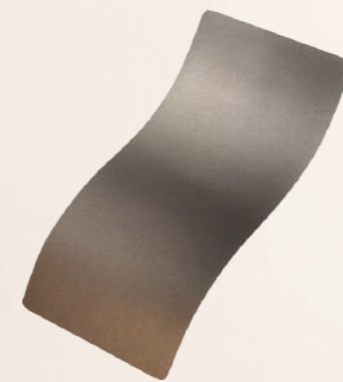
COBALT
C-112



SATIN NICKEL
C-124



HUNTER ORANGE
C-128



STAINLESS
C-129



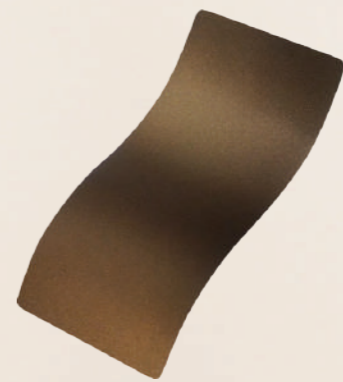
JET BLACK
C-138



BRIGHT WHITE
C-140



STOPLIGHT RED
C-143



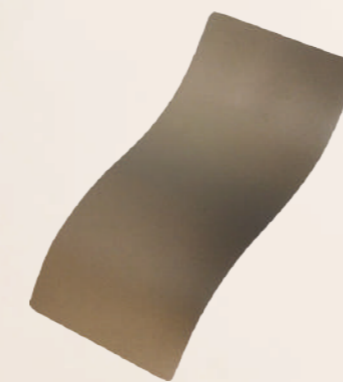
BURNT BRONZE
C-148



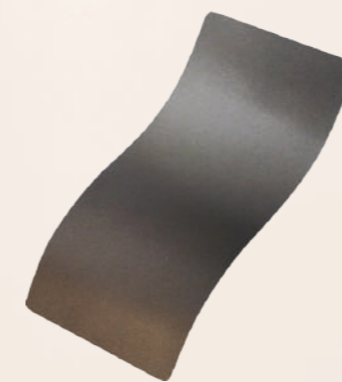
BLUE FLAME
C-158



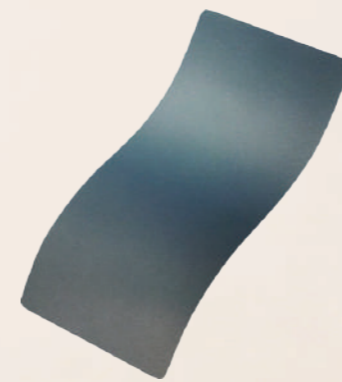
LOLLYPOP PURPLE
C-163



PISTON COAT
C-186



TRANSFER GREY
C-187



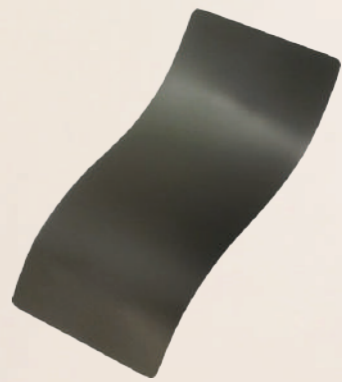
BLUE TITANIUM
C-189



COYOTE
C-190



ARMOR BLACK
C-192



DARK GREY
C-209



DESERT SAND
C-211



FOREST GREEN

C-241

COYOTE TAN

C-240

SNIPER GREY

C-239

OD GREEN

C-232

FOLIAGE GREEN

C-231

TACTICAL GREY

C-228

PATRIOT BROWN

C-226

GUN METAL GREY HIGHLAND GREEN

C-219

C-215



DEEP BLUE

C-299

BLACK CHERRY

C-298

AQUA TEAL

C-297

VORTEX BRONZE

C-293

MAGPUL FDE

C-267

FLAT DARK EARTH MIL SPEC OD GREEN

C-246

C-244

HIDDEN WHITE

C-242



FS FIELD DRAB

C-30118

GLACIER FORGE

C-8200

GLACIER TITANIUM

C-7900

GLACIER GOLD

C-7800

GLACIER SILVER

C-7700

GLACIER BLACK

C-7600

BLACK VELVET

C-7300

LEMON ZEST

C-300

