



MAGTRAK.

A photograph of a bar area with a brick wall. The bar counter is made of wood and has various items on it, including bottles, glasses, a copper pot, mugs, and a teapot. Two vintage-style lanterns are mounted on the wall. Track lighting is visible on the ceiling. The text "The Ultimate Lighting Solution." is overlaid in the center.

The Ultimate Lighting Solution.

Introducing Magtrak .

Magtrak is a flexible 24V magnetic track lighting system designed for effortless installation and creative freedom. Compact, minimalist tracks house LED light modules that attach magnetically, allowing quick, tool-free setup with a simple click.

Thanks to its low-voltage design, modules can be added or repositioned even while powered on. Once connected, they are instantly energized and ready to use—making adjustments fast and intuitive.

With a varied choice of track lengths, connectors, mounting options, light modules, and control solutions, Magtrak offers endless configuration possibilities. It's a complete lighting system created for architects and designers who value precision, adaptability, and refined design.





Stylishly Slim .

The Magtrak system measures just 27mm wide, providing a sleek, unobtrusive addition to any interior.



Lighting Flexibility .

The use of magnetic modules allows for continuous lighting adjustment, to create a lighting design that adapts to any environment



Driver Convenience .

Drivers can be installed directly on the system for easy maintenance, or hidden up to 50m away for a more seamless aesthetic



Endless Configurations .

Create any running formation possible with our many different connectors, enabling any design dream to be fulfilled.





Build Your Magtrak .

1. Pick Your Profile

2. Create a Formation

3. Choose Your Modules



MAGTRAK PROFILE

0.3m / 0.5m / 0.8m / 1m / 2m

Recessed / Surface*

TRIAC / DALI

Black / White

**surface profile creates suspended using pendant kit*



RECESSED.L

Black / White



RECESSED.T

Black / White



INNER RECESSED.L

Black / White



OUTER RECESSED.L

Black / White



SURFACE.L

Black / White



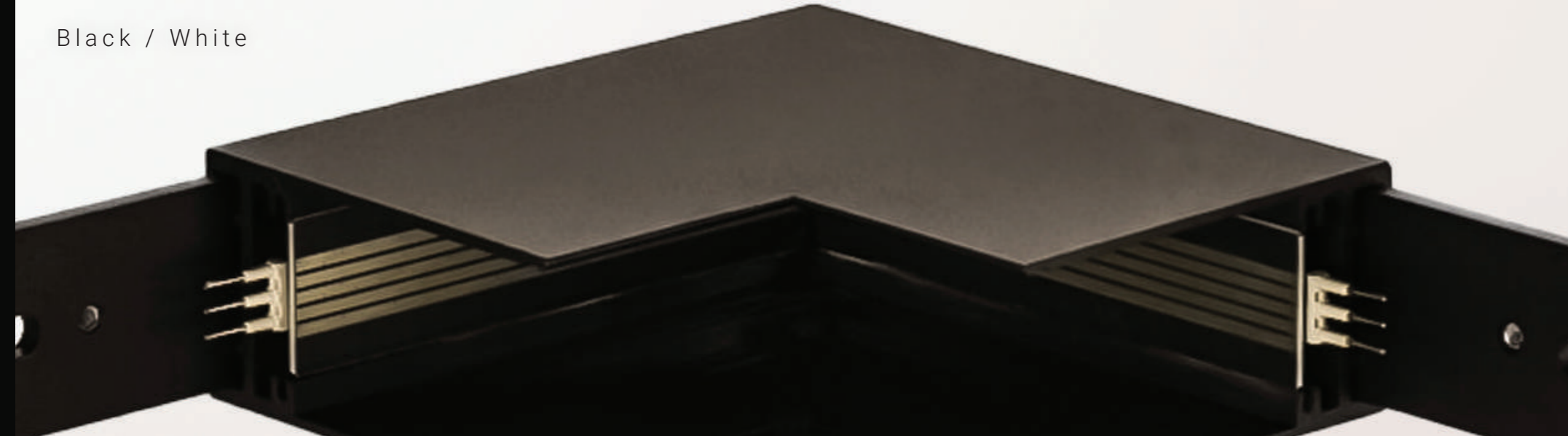
SURFACE.T

Black / White



INNER SURFACE.L

Black / White



OUTER SURFACE.L

Black / White





DOT.06

6W | 510Lm | CRI >95

TRIAC

Black / White

20° / 34° / 48°

2700K / 3000K / 4000K

DOT.12

12W | 1020Lm | CRI >95

TRIAC / DALI

Black / White

20° / 34° / 48°

2700K / 3000K / 4000K

DOT.24

24W | 1875Lm | CRI >95

TRIAC / DALI

Black / White

20° / 34° / 48°

2700K / 3000K / 4000K



FOCUS.35

5W | 530Lm | CRI >95

TRIAC / DALI

Black / White

20° / 30° / 40°

2700K / 3000K / 4000K



FOLD.06

8W | 685Lm | CRI >95

TRIAC

Black / White

20° / 34° / 48°

2700K / 3000K / 4000K



FOLD.12

15W | 1150Lm | CRI >95

TRIAC / DALI

Black / White

20° / 34° / 48°

2700K / 3000K / 4000K

LINE.20

8W | 605Lm | CRI >95

TRIAC / DALI

Black / White

110°

2700K / 3000K / 4000K

LINE.40

13W | 1015Lm | CRI >95

TRIAC / DALI

Black / White

110°

2700K / 3000K / 4000K

LINE.80

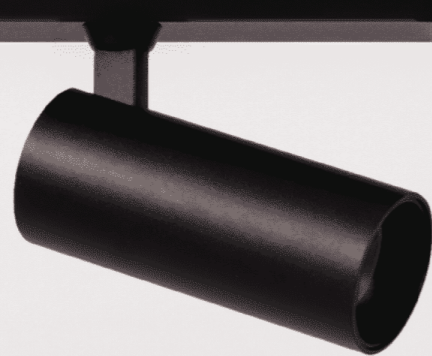
25W | 1970Lm | CRI >95

TRIAC / DALI

Black / White

110°

2700K / 3000K / 4000K



SPOT.35

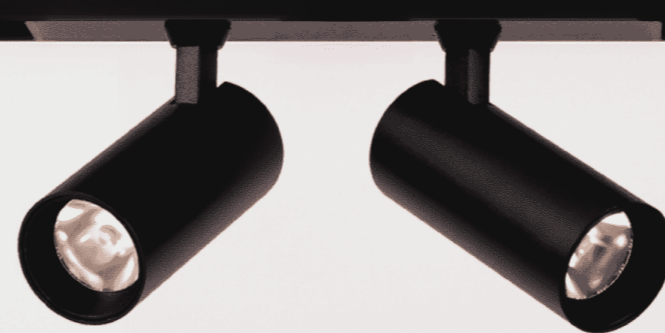
5W | 526Lm | CRI >95

TRIAC / DALI

Black / White

20° / 30° / 40°

2700K / 3000K / 4000K



SPOT.35.T

10W | 1052Lm | CRI >95

TRIAC

Black / White

20° / 30° / 40°

2700K / 3000K / 4000K



SPOT.50

8W | 682Lm | CRI >95

TRIAC / DALI

Black / White

18° / 24° / 36°

2700K / 3000K / 4000K



WAVE.20

10W | 750Lm | CRI >95

TRIAC / DALI

Black / White

2700K / 3000K / 4000K



WAVE.30

15W | 1140Lm | CRI >95

TRIAC / DALI

Black / White

2700K / 3000K / 4000K



ZOOM.55

10W | 800Lm | CRI >95

TRIAC / DALI

Black / White

20° - 60°

2700K / 3000K / 4000K



